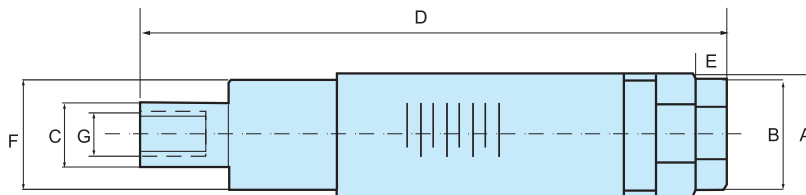


Z-6300 series flow monitor is used in industrial automatic equipment, engineering machinery, refrigeration and air conditioner, hydraulics applications. with S.S. case, high pressure resistant, clear to read scales.



### Specifications

Model	Thread (BSP)	Range L/min	Max. working pressure (Bar)	Sizes					
				A	B	C	D	E	F
Z-6311	1/4	0.2-2	350	32	27	21	123	7	32
Z-6312	1/4	0.5-4.5	350	32	27	21	123	7	32
Z-6313	1/4	2-10	350	32	27	21	123	7	32
Z-6314	1/2	2-20	350	40	32	31	165.5	12.5	44
Z-6315	1/2	5-46	350	40	32	31	165.5	12.5	44
Z-6316	3/4	5-55	350	48	44	36	190	15	50
Z-6317	3/4	10-100	350	48	44	36	190	15	50
Z-6318	1¼ (1½)	20-180	350	84	79	66	210	18	79
Z-6319	1¼ (1½)	30-270	350	84	79	66	210	18	79
Z-6320	1¼ (1½)	40-360	350	84	79	66	210	18	79